



www.masterkit.com  
info@masterkit.com  
Tfno: 91 450 30 50  
Tfax: 91 450 30 50

Avda. Doctor Federico Rubio, 51.  
28039 Madrid

# EL ABUELO TOMAS

Producto nº

393

Complete plans for building the internal workings of a grandfather clock! The whole clock is made out of wood, including the gears! Best of all, you need only to cut the templates out of the plans, paste them onto wood and cut along the lines. This clock can even be made with a hand-saw! No special tools are required!

Mr. R. D. Thomas invented this Grandfather Clock Movement over forty years ago. Since then, nearly one million people throughout the world have enjoyed making and owning this perfect conversation piece. It is very practical too -- it will regulate to accuracy of approximately fifteen seconds per week! (A finished Thomas Grandfather Clock Movement is perpetually displayed in the British Historical Museum)

The Thomas Grandfather Clock Movement is an ideal project for the woodworking enthusiast who takes pride in producing, by his or her own handcraft, something original and different.

The finished clock may be mounted in a grandfather type case or simply supported on tall legs leaving all working parts visible.

Three distinct features of this clock make it different from any other pendulum-type clock:

- (1) With exception of the weight, pulleys and cord, which drive the clock, it is made entirely of wood.
- (2) It is designed in kit form and may be dismantled and reassembled in seconds.
- (3) It features a sweep hand which moves in one-second steps.

## Easy Construction

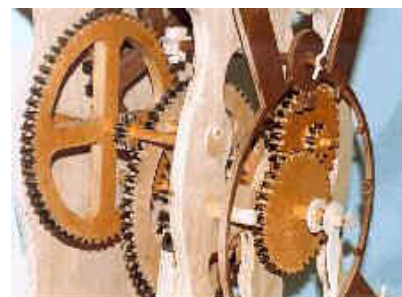
Building this grandfather clock is really very easy.

The gears and various clock pieces are drawn out on paper.

Simply cut out each item and glue this "paper template" to the wood. Wait for the glue to dry and cut out the clock piece.

No specialized tools are needed, but electric powered equipment is very helpful.

***This is one of our easiest clocks to build. Once regulated, it keeps perfect time and it is fascinating to watch as it keeps time. It is an excellent family project and it is very rewarding to own!***



The finished clock is 14" w, 22" h, and 12" d.  
**Mecanismo de madera**

No se encuentra la imagen.

---

**Mecanismo****Información de montaje**

## List Of Materials Needed

For the gears: Two pieces of kiln dried hardwood 1/2" thick, 35" x 13-1/2". May be fabricated using edge glued 2-1/2" strips. Birch or equivalent close-grained wood is recommended.

Standard maple dowels: seven feet of 1/4" d

---

Ref.: **14 - 393 - 139**

PVP

31,28 €

No se  
encuentra  
la imagen.



www.masterkit.com  
info@masterkit.com  
Tfno: 91 450 30 50  
Tfax: 91 450 30 50

Avda. Doctor Federico Rubio, 51.  
28039 Madrid

## Mi primer Reloj

Producto nº

394

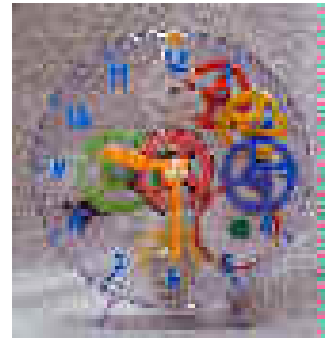
### Perfect For Ages 6 to 15!

Hey kids, have you ever wondered what makes the clock on ythis wall work so perfectly? Have you ever wanted to open up the back of a clock to see what makes move?

It has a see-through plastic face!

It has colorful plastic gears!

It has a swinging pendulum which "clicks" like all clocks as it keeps perfect time. You will be excited and proud when the clock you put together keeps perfect time, ringing its bell periodically to let you know it is working and keeping the correct for you and ythis family to see.



It measures 7-1/2"s across and stands 8-1/2"s high

No se encuentra la imagen.

Mi primer reloj  
Kit completo

Ref.: 14 - 394 - 335

PVP 26,73 €

Sin  
imagen  
definida.



www.masterkit.com  
 info@masterkit.com  
 Tfno: 91 450 30 50  
 Tfax: 91 450 30 50

Avda. Doctor Federico Rubio, 51.  
 28039 Madrid

# RELOJ DE PARED TOMAS

Producto nº

391

## Keeps perfect time!

Over fifty-five years ago, Mr. Thomas invented and patented this unusual all-wood, wall-clock kit.

The Clock Kit is sure to be an heirloom in ythis family's history. It is a traditionall designed clock that is a masterpiece of engineering, beauty and elegance!

It is made entirely out of, select, imported, Russian, kiln-dried, Baltic Birch hard-wood, gears and all! It assembles with relative ease. The finished clock is 18"s high (with the shown supports), 8"s wide, and 6"s deep.

Once assembled, the completed clock may be finished any way you like. Most people prefer to stain the wood and leave the "workings" exposed for all to see! This clock is truly an exceptional and unique conversation piece!

### About The Special Wood:

Imported, hand-selected, Russian, Baltic Birch is used because of its extreme durability ; its resistance to moisture-swelling and warping. There is really no other wood available that has the desired qualities of this wood, when it comes to wooden-gears and clock making. Additionally, this wood we use is really quite beautiful in its own right, not to mention the fact that it stains very nicely! Cherry or Walnut stains are simply beautiful on this wood.

The Kit is laser-cut for the ultimate in accuracy .



8"s Wide 18"s High 6"s Deep  
 With Pendulum, 50"s High

The finished clock is 13"s high,  
 9"s wide, and 7"s deep.

Peso: 10 lbs.  
 Mecanismo de madera



### Mecanismo Kit completo

Additional items needed for this kit: A weight to drive the clock-- any 4 to 7 pound weight will do. You will also need wood glue, winding cord, sandpaper, a total of 69"s of 1/4" dowel and 18"s of 1/8" dowel. All of these items are inexpensive and are re

Ref.: 14 - 391 - 138  
 PVP 215,53 €

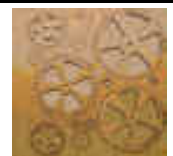
No se encuentra la imagen.

### Conjunto de ruedas dentadas Kit incompleto

Peso: 2 lbs.

The Clock Plans are also Included

Ref.: 14 - 391 - 138  
 PVP 94,73 €



As you have probably noticed, we are providing more than just the gears with our "gear sets". In addition to the gears, we are providing the pallet, the "clicker" for the weight wheel, and the "disks" f

---

**Plano****Información de montaje**

It is a beautiful and functional wall clock that keeps very accurate time. It can easily be converted to a splended grandfather clock movement by removing the support plates (instructions are included in the plans) and setting it on a shelf. It's really

Ref.: **14 - 391 - 139**

PVP	31,28 €
-----	---------

No se  
encuentra  
la imagen.

---



www.masterkit.com  
 info@masterkit.com  
 Tfno: 91 450 30 50  
 Tfax: 91 450 30 50

Avda. Doctor Federico Rubio, 51.  
 28039 Madrid

# Reloj IMPERIO

Producto nº

387

Reloj fabricado con madera de gran calidad para conseguir la máxima precisión.

A large range of beautifully finished solid hardwood clocks are available. Hand crafted from high quality grained woods, individually assembled and tested.



Mecanismo de madera



Base COLONIAL, con pesas doradas

Kit completo

Incluye pesas doradas

Ref.: 14 - 387 - 1384

PVP 290,28 €



Base TORRE, con pesas doradas

Kit completo

Incluye pesas doradas

Ref.: 14 - 387 - 1384

PVP 269,55 €



Base ÁRBOL, con pesas doradas

Kit completo

Incluye pesas doradas

Ref.: 14 - 387 - 1384

PVP 255,72 €



Base CUBISTA, con pesas doradas

Kit completo

Incluye pesas doradas

Ref.: 14 - 387 - 1384

PVP 241,91 €



Pesas forradas de madera

Accesorio Montado

Ref.: 14 - 387 - 1384

PVP 32,07 €

No se encuentra la imagen.



www.masterkit.com  
 info@masterkit.com  
 Tfno: 91 450 30 50  
 Tfax: 91 450 30 50

Avda. Doctor Federico Rubio, 51.  
 28039 Madrid

# Reloj OXFORD

Producto nº

392

## Keeps perfect time!

**A masterpiece of engineering that is also a laser-cut, all-wooden clock, gears and pendulum. It is also very beautiful!**

**There is a special space on the clock for personalization, such as a Brass Plaque, photo, hand-painted picture or other item that is near and dear to "that special person" you are building the clock for!**

The wood used for this kit is hand-selected, imported, Russian, multi-ply Baltic Birch that kiln dried. It finishes absolutely beautifully!

The Kit is laser-cut for the ultimate in accuracy. The average woodworker can certainly build the Clock from scratch and achieve this accuracy, but this requires some skill and patience. A person assembling a laser-cut wood-clock can virtually bypass these old-fashioned virtues!



**11"s Wide 18"s High 6"s Deep  
 With Pendulum, 50"s High**

**Peso: 10 lbs.  
 Mecanismo de madera**



### Gift Clock Kit completo

Additional items needed for this kit: A weight to drive the clock-- any 4 to 7 pound weight will do. You will also need wood glue, winding cord, sandpaper, a total of 69"s of 1/4" dowel and 18"s of 1/8" dowel. All of these items are inexpensive and are r

Ref.: **14 - 392 - 139**  
 PVP **215,33 €**

No se encuentra la imagen.

### Conjunto de ruedas Kit incompleto

Peso: 2 lbs.

As you have probably noticed, we are providing more than just the gears with our "gear sets". In addition to the gears, we are providing the pallet, the "clicker" for the weight wheel, and the "disks" for the weight arbor wheel. It just ma

Ref.: **14 - 392 - 139**  
 PVP **94,73 €**



### Gift Clock, planos Información de montaje

Additional items needed with our plans: A weight to drive the clock-- any 4 to 7 pound weight will do. You will also need wood glue, winding cord, sandpaper, a total of 69"s of 1/4" dowel and 18"s of 1/8" dowel. All of these items are inexpensive and

Ref.: **14 - 392 - 139**  
 PVP **31,28 €**

No se encuentra la imagen.



www.masterkit.com  
 info@masterkit.com  
 Tfno: 91 450 30 50  
 Tfax: 91 450 30 50

Avda. Doctor Federico Rubio, 51.  
 28039 Madrid

# Reloj PUZZLE

Producto nº

386

## Sin cola ni clavos!

Reloj con escape de balancín que no requiere para su montaje ningún tipo de clavos, tornillos ni cola.

This clock operate with what we call "a verge and foliot." Essentially, the top horizontal bar moves left and then right, suspended by a thin cord. The pallet engages the escape wheel while the bar turns back and forth and the escape gear turned in one second intervals. The original verge and foliot clocks were not very accurate. In fact, many earlier versions of this clock had only an hthis hand!

This clock is now extremely accurate, revolutionary by using not one, but two esc wheels. This changed everything!

The Puzzle Clock is router cut, with great precision. This clock kit is supplied in boards where the cut pieces snap easily out of the boards. The wood is fiberboard MDF, 28% resin -- extremely durable stuff and nice to work with.

A wonderful clock kit that anybody can assemble.  
 Machined from strong wood fibre board. 1/4" thick.  
 Precision engineered. Great price. A perfect gift.

*Can you believe it? No gluing, no nails? The clock pieces fit together with extrem precision. This kit is that well designed! The kit instructions are step by step and nicely detailed. Most people find this kit very relaxing to assemble.*



**No cutting. With this kit, there is no gluing, no nails, no cutting, r dowels to buy and no tools are needed!**

**17-3/4" High  
(455 mm)**

**Peso: 5 lbs.**



### Reloj sin pesas, con soporte para lata Kit completo

No incluye pesos. Preparado para usar como pesa una lata de refresco.

Ref.: **14 - 386 - 138**

PVP **79,48 €**



### Pesas doradas de acero Accesorio Montado

Pesan 1'5 pounds. Se necesitan dos unidades.

Ref.: **14 - 386 - 138**

PVP **12,03 €**

No se encuentra la imagen.





www.masterkit.com  
 info@masterkit.com  
 Tfno: 91 450 30 50  
 Tfax: 91 450 30 50

Avda. Doctor Federico Rubio, 51.  
 28039 Madrid

# Reloj s. XIV

Producto nº

385

Reloj de una sola manecilla fabricado con madera dura selecta, fácil de construir, basado en un diseño del s.XIV

Made from selected hard woods. Easy to build, fully machined kits . Driven by slo descending weights, the clock are based on authentic 14th century designs and keep accurate time.

The "tic-toc" sound and motions of an old fashioned clock have fascinated people all ages for centuries.

Originally built for monks to wake them for prayer, the accuracy comes from the unique escapement known as a "verge and foliot". The design changed very little over the next 300 years until the pendulum was invented.

The clock, crafted in a medieval style, resemble the first weight-driven models invented in the 14th Century .

This clock is precision engineered and designed for simple assembly and maintenance ar should give many years of satisfaction and delight.



High 16-1/2"(420mm)



Reloj con pesas de acero  
 Kit completo

Incluye pesas de acero

Ref.: 14 - 385 - 137  
 PVP 107,13 €

No se encuentra la imagen.

Pesas forradas de madera  
 Accesorio Montado

Ref.: 14 - 385 - 138  
 PVP 32,07 €

No se encuentra la imagen.



www.masterkit.com  
 info@masterkit.com  
 Tfno: 91 450 30 50  
 Tfax: 91 450 30 50

Avda. Doctor Federico Rubio, 51.  
 28039 Madrid

# Skeleton Movement

Producto nº

307

No skeleton in this closet - it's right out front on this charming little shelf. We've had many requests from clients for this kind of exposed-movement "skeleton" clock, giving an inside look at the workings of a precision timepiece.

Here's a small masterpiece that offers both an education and a great looking wall-mounted timepiece. This clock runs on 8.5 pounds (3.3 kg) of weight, falling 6 inches (152 mm) in 24 hours.

The clock stands 10 inches high on the included hardwood mounting shelf (not as shown). All the precision parts of this fine mechanism are machined from solid brass - no inexpensive stampings here.

An enjoyable entry for the newcomer, this skeleton clock not only tells time superbly well but makes a great conversation piece.



**Specifications SK01**  
 Height (without handle) 10" (254 mm)  
 Width 6" (152 mm)  
 Depth 6" (152 mm)  
 Pendulum Rod Length 39.14" (1000 mm)

**Specifications WB3**  
 WB3 C/O Shelf in Cherry/Oak  
 Width 11.5" (292 mm)  
 Depth 6.25" (159 mm)  
 Height 8.25" (210 mm)

No se encuentra la imagen.

## Skeleton Movement WB 3 Shelf

### Accesorio en kit

Complete with Dial, Weight and shell. WB3 Shelf (optional)

Ref.: 14 - 307 - 122

PVP 572,00 €

No se encuentra la imagen.

## Skeleton Movement

### Accesorio en kit

WB3 C- cerezo Shelf, WB3 O- Oak Shelf

Ref.: 14 - 307 - 122

PVP 43,20 €

No se encuentra la imagen.